

Annotated images

Minolta Corporation's DiMAGE Messenger software program allows users to connect written text to specific portions of digital images, share the combination with others via e-mail or printed copy, and invite related comments to be added from the receiver. The program specifies the time, date and name of person making the comment displayed and links to the corresponding marked portion of a digital image. The DiMAGE Messenger files can be printed to show the original image with the detailed image sections arranged in up to three columns and the corresponding text beneath each. These annotated images can be sent to others via e-mail from within the application by selecting the "mail" button from the command program's menu.

Circle 126 on Reader Service Card

FBI-certified card printing

Mentalix Inc.'s CardPrint API Toolkit enables systems integrators to add FBI-certified fingerprint card printing functionality to existing law enforcement solutions and is one of the most cost-effective printing alternatives available for fingerprint system developers. CardPrint API Toolkit runs on Windows XP/NT/2000 and supports the Lexmark T522 laser printer, known for its speed and high-resolution output. The printed images produced by CardPrint are of such quality that the resulting ten-print cards can be used for fingerprint identification purposes. CardPrint's FBI certification status means that the FBI will accept the CardPrint cards for comparisons against the bureau's IAFIS (Integrated Automated Fingerprint Identification System) fingerprint database.

Circle 128 on Reader Service Card



Traffic management solution

Alvarion Inc. offers the BreezeACCESS TM, a traffic management system that offers public safety officials the ability to securely carry and manage 911 and other emergency messages in their wireless fixed and mobile networks. Comprising a complete set of traffic management tools contained in a standalone system extension to the Breeze-ACCESS product line, the TM solution enables traffic managers to accurately control the amount of bandwidth allocated to each user and the priority of each message in the link. The TM system is typically deployed at the network operations center to establish up to 10 levels of overall traffic priority and to set the bandwidth throughput of each subscriber in the network as defined by minimum, maximum, guaranteed and committed burst rates.

Circle 127 on Reader Service Card

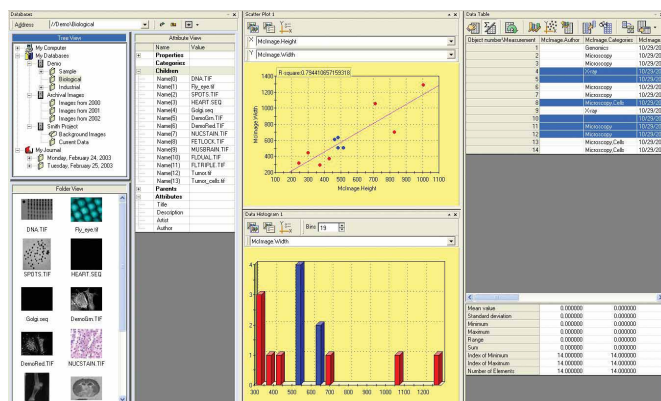


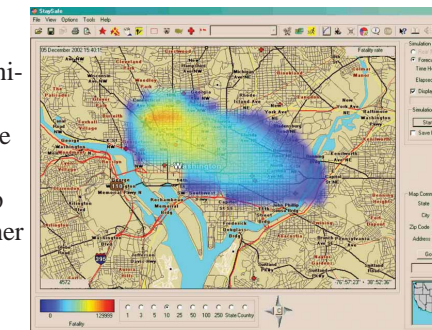
Image management

Media Cybernetics Inc., a scientific and industrial image analysis software provider, announces release of IQbase, a new way to archive, manage and extract knowledge from all images and associated data. IQbase is an intelligent database that concentrates on information derived from images. IQbase provides accessibility from the pixel level to the meta-data level. With IQbase, images and information can be viewed and managed together, in one place. Plus, users can conduct searches based on image data to locate other similar archived images and drive discovery.

Circle 129 on Reader Service Card

NBC training software

The NBC-HAS is a software training package for cities and NBC response organizations. This software package allows accurate pre-event simulation of terrorist events using nuclear, biological and chemical warfare agents. The Hazard Avoidance Software (HAS) program, available from **Life Safety Systems**, employs artificial intelligence and simulation capabilities into a CD-ROM/Web-based solution to help municipalities and first-response agencies prepare and plan for NBC events and other disaster situations. With the software, officials can simulate nuclear and chemical leaks, airborne biological agents or other threats. Drawing from real-time weather service and other data, it will map the emission's pattern of movement, and provide background on the agent, as well as guidance on protecting against or avoiding the emission.



Circle 130 on Reader Service Card



Personnel selection software

CritiCall Personnel Selection Software, an automated pre-employment selection testing system, has been upgraded to CritiCall 3.0. This version features three new tests to assess job applicants' job-related competency in: reading comprehension, spelling and sentence clarity. It also contains features that make the administration and scoring of CritiCall even simpler than previous versions, including the addition of an "on-screen" tutor that guides the test-taker through the testing process. CritiCall is 100-percent PC-based, and provides an accurate assessment of the actual skills and multitasking abilities in a computer-related environment for demanding dispatching positions. CritiCall is designed to measure knowledge, skills and abilities of individuals with no dispatch or call-taking experience prior to the test, assessing overall capabilities to perform and learn.

Circle 131 on Reader Service Card



Database upgrade

Information Management Corporation (IMC), a public safety software company, has upgraded its software to the Pervasive.SQL V8 database. Developed over a decade ago on Btrieve, predecessor to Pervasive.SQL, IMC's applications depend on the high-reliability and low-administration requirements of the powerful database from Pervasive Software Inc. IMC supplies more than 500 state and local police, fire and sheriff departments with software to preserve and manage vital public safety data and resources. The combined technology from IMC and Pervasive helps deliver to public safety professionals stability, ease of use and seamless data integration. These users expect and need the reliability and security Pervasive.SQL provides to their data when they share dispatch information, log incident reports, access criminal files and use geographic mapping tools.

Circle 132 on Reader Service Card

Arson investigation

FireFiles Fire & Arson Investigation Software from **Albanese Consulting Inc.** is an industry standard for fire investigation case management. FireFiles provides a tool for fire investigators to manage, track and report on case data. This software is one of the nation's first systems designed specifically for fire investigators by fire investigators. By moving data from paper or spreadsheet-based systems, investigators can harness the power of a multiuser database application. Investigators can easily manage case data related to structures, vehicles, wildfires, insurance policies, mortgage and loan records, adults and juveniles, arrests, case narratives, interviews, evidence, K-9 examinations and digital images.



Circle 133 on Reader Service Card